

AVATAR WALKTHROUGH TUTORIAL
VERSION 4.5
APRIL 2007
DOCUMENT REVISION 1.0

TERMS OF USE/SOFTWARE LICENSE AGREEMENT

Thank you for using Avatar, a software application provided by Vexus Consulting Group Inc. (the "Company"). This page states the terms and conditions (the "Terms" or the "Agreement") under which you may use the software. Please read this page carefully. By use of the software you accept and agree to be bound, without limitation or qualification, by these Terms. If you do not accept any of the Terms stated here, do not use the software. The Company may, in its sole discretion, modify or revise these Terms at any time. The Company may, in its sole discretion, modify, revise, or rewrite the software at any time, without penalty of prosecution or breach of this agreed contact.

Use of Material

The contents of this document, including but not limited to text, software, photographs, graphics, illustrations, artwork, video, music, sound, names, logos, trademarks, service marks and other material ("Material" or "Materials") are protected by copyright and other laws in both Canada and elsewhere. The Material includes both content owned or controlled by the Company, and content owned or controlled by third parties and licensed to the Company.

You may not sell or modify the Material or reproduce, display, publicly perform, distribute, or otherwise use the Material in any way for any public or commercial purpose without the written permission of the Company. Special rules may apply to the use of certain software and other items provided by The Company. Any such special rules are listed as "Legal Notices" are incorporated into this Agreement by reference.

Warranty of Information

THE SOFTWARE AND MATERIALS ARE PROVIDED ON AN "AS IS" BASIS WITHOUT ANY WARRANTIES OF ANY KIND, WHETHER EXPRESS OR IMPLIED. THE COMPANY AND ITS SUPPLIERS, TO THE FULLEST EXTENT PERMITTED BY LAW, DISCLAIM ALL WARRANTIES, INCLUDING BUT NOT LIMITED TO WARRANTIES OF TITLE, FITNESS FOR A PARTICULAR PURPOSE, MERCHANTABILITY AND NON INFRINGEMENT OF PROPRIETARY OR THIRD PARTY RIGHTS. THE COMPANY AND ITS SUPPLIERS MAKE NO WARRANTIES ABOUT THE ACCURACY, RELIABILITY, COMPLETENESS, OR TIMELINESS OF THE MATERIAL, SERVICES, SOFTWARE, TEXT, DOCUMENTS, GRAPHICS, AND LINKS.

THE COMPANY DOES NOT WARRANT THAT THE SOFTWARE WILL OPERATE ERROR-FREE OR THAT THIS SOFTWARE OR ITS SERVER(S) ARE FREE OF POSSIBLY HARMFUL ITEMS. IF YOUR USE OF THE SOFTWARE OR THE MATERIAL RESULTS IN THE NEED FOR SERVICING OR REPLACING EQUIPMENT OR DATA, THE COMPANY IS NOT RESPONSIBLE FOR THOSE COSTS. IF YOUR USE OF THE SOFTWARE RESULTS IN POTENTIAL AND/OR REALIZED LOSS, THE COMPANY IS NOT RESPONSIBLE FOR THESE LOSSES.

Limitation of Liability / Disclaimer of Damages

Your use of the Software is at your own risk. If you are dissatisfied with any of the Materials or other contents of the Software or with these Terms and Conditions, the Company's Privacy Policy, or other policies, your sole remedy is to discontinue use of the Software.

IN NO EVENT SHALL THE COMPANY OR ITS SUPPLIERS BE LIABLE TO ANY USER OR ANY THIRD PARTY FOR ANY DAMAGES WHATSOEVER (INCLUDING, WITHOUT LIMITATION, DIRECT, INDIRECT, CONSEQUENTIAL, SPECIAL, EXEMPLARY OR LOST PROFITS) RESULTING FROM THE USE OR INABILITY TO USE THE SOFTWARE OR THE MATERIAL, WHETHER BASED ON WARRANTY, CONTRACT, TORT, OR ANY OTHER LEGAL THEORY, AND WHETHER OR NOT THE COMPANY IS ADVISED OF THE POSSIBILITY OF SUCH DAMAGES.

Indemnity

You agree to defend, indemnify, and hold harmless the Company, its officers, directors, employees and agents, from and against any claims, actions or demands, including, without limitation, reasonable legal and accounting fees, alleging or resulting from your use of the Material (including Software) or your breach of the terms of this Agreement. The Company shall provide notice to you promptly of any such claim, suit, or proceeding and shall reasonably assist you, at your expense, in defending any such claim, suit or proceeding.

TABLE OF CONTENTS

1	INTRODUCTION.....	1
1.1	Purpose and Scope of this document.....	1
1.2	Intended Audience.....	1
1.3	Document Conventions.....	1
1.4	Related Documents.....	2
1.5	Contacting Us.....	2
2	WHAT IS THE USER INTERFACE?.....	3
2.1	User Interface Login Form.....	3
2.1.1	Avatar Server.....	3
2.1.2	Username.....	3
2.1.3	Password.....	3
2.1.4	NT Domain.....	3
2.2	Logging into the User Interface.....	3
3	NETWORK VIEW.....	5
3.1	Persistent User Profile.....	5
4	SERVER VIEW.....	6
5	REGISTER A BATCH RECORD.....	7
6	BATCH VIEW.....	9
7	BATCH CONTROL.....	10
7.1	Starting the Batch.....	10
7.2	Stopping the Batch.....	11
7.3	Acknowledging the Batch Error.....	11
7.4	Pausing the Batch.....	12
7.5	Resuming the Batch.....	12
7.6	Disabling the Batch.....	13
8	LOGGING OUT.....	14

INDEX OF TABLES

Table 1-1 Document Conventions.....	1
Table 1-2 Related Documents.....	2
Table 1-3 Contact Information.....	2

Illustration Index

Illustration 2-1Avatar Client Login Form.....	3
Illustration 3-1Empty Network View Form.....	5
Illustration 4-1Empty Server View Form.....	6
Illustration 5-1Add Batch Button.....	7
Illustration 5-2Empty Add Batch Form.....	7
Illustration 5-3Example Batch Registration.....	8
Illustration 5-4Server Form with Newly Registered Batch.....	8
Illustration 6-1Batch View Form.....	9
Illustration 7-1Start Batch Button.....	10
Illustration 7-2Running Batch Details.....	10
Illustration 7-3Start Batch Button.....	11
Illustration 7-4Acknowledge Batch Form.....	11
Illustration 7-5Acknowledge Batch Button.....	11
Illustration 7-6Pause Batch Button.....	12
Illustration 7-7Paused Batch Form.....	12
Illustration 7-8Disabled Batch Form.....	13

1 Introduction

What is *Avatar*? *Avatar* is a sophisticated batch processing client/server application. *Avatar* is designed to bridge the gap between what standard Unix and NT based systems provide for batch scheduling (*cron*) and the requirements of most (if not all) Unix and NT based information technology companies. *Avatar* provides features for reporting on success or error, creating windows of time for commands, system load balancing for resource intensive processes, and many other features.

1.1 Purpose and Scope of this document

This document is a walk-through of the Avatar user interface.

1.2 Intended Audience

This document is directed at Avatar users.

1.3 Document Conventions

In order to keep the documentation as consistent as possible The following table outlines the conventions that are used in this document.

TABLE 1-1 DOCUMENT CONVENTIONS

TYPE	PURPOSE
Bold Courier Font	A command to be typed in.
Courier Font	Output of a command.
Bold dollar sign. (\$)	Bourne shell prompt. (Not to be typed in).
Bold percent sign (%)	C shell prompt (Not to be typed in).
Bold pound sign. (#)	Root shell prompt. (Not to be typed in).
<i>Bold Italics</i>	System command reference or form button.
<i>Italics</i>	A form label reference. Usually a table column header or a field form label.
<i>Italic Courier Font</i>	A filename or directory name.
CAPITOLIZED BOLD	Environment variable names.

1.4 Related Documents

TABLE 1-2 RELATED DOCUMENTS

DOCUMENT	DESCRIPTION
Avatar Server Install Guide	This document details how to install the Avatar server.
Avatar Client Install Guide	This document details how install and configure the Avatar client interfaces.
Avatar Administrative Interface	This document details how to use the Avatar administrative interface.
Avatar User Interface	This document details how to use the Avatar user interface.
Avatar Command File Format	This document details the syntax and structure of the Avatar command file.
Avatar Executive White Paper	The Avatar executive white paper is a short two page overview of Avatar's capabilities and design.
Avatar Technical White Paper	The Avatar technical white paper is a in-depth technical white paper detailing the design and architecture of Avatar.

1.5 Contacting Us

To ask any pre-sales or post-sales questions, please use one of the following methods.

TABLE 1-3 CONTACT INFORMATION

METHOD	ADDRESS
Web Site	http://www.vexus.ca
E-mail	sales@vexus.ca

2 What is the User Interface?

The Avatar user interface is a web based interface whose purpose is to add, modify and manage batch jobs on Avatar servers. There are 2 interfaces: the user interface and the administrative interface. This walk through provides basic information for the User Interface.

2.1 User Interface Login Form

Since Avatar's user interfaces are web based, the administrator who installed the Avatar clients should be able to give you the URL for the user interface. Once you have the URL to the user interface, you should see the login form. The login form is depicted in the following illustration.

Avatar Job Scheduling Suite Login Form

Avatar Server	<input type="text"/>
Username	<input type="text"/>
Password	<input type="password"/>
NT Domain	<input type="text"/>

Only fill in the Domain field if you are authenticating against a Windows NT based operating system.

Avatar Administrative Interface, 04.6.0
Copyright 1997-2000 Vexus Consulting Group
All Rights Reserved

Illustration 2-1 Avatar Client Login Form

2.1.1 Avatar Server

This is the system hostname of the server running Avatar. An IP address, absolute hostname or relative hostname is fine. This field is required.

2.1.2 Username

This field is the user which you want to log into the user interface. All usernames and passwords in Avatar are borrowed from the server on which the server is running. If you try to log in with a user which does not exist on that server, you will not be given access. By default any user that is defined on the server will be provided access. If your company wants to put restrictions on who can use Avatar; you can define access rules via the Administrative Interface. This is outside the scope of this tutorial. This field is required.

2.1.3 Password

This field is the password of the username field. This field is also required.

2.1.4 NT Domain

The NT Domain field is the NT domain of the Avatar server if the server is running on the NT operating system. This field is required if you are trying to access a NT server; leave it empty otherwise.

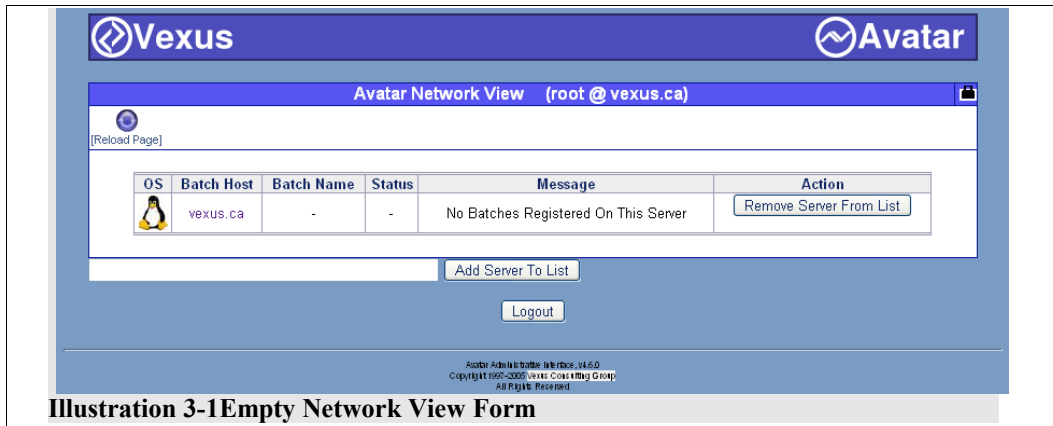
2.2 Logging into the User Interface

In order to log into Avatar; fill in the form with the hostname of the server running Avatar, the user and the user's password you wish to use to register batches with. If you are authenticating against an NT Domain, enter the NT Domain in the appropriate field.

Once all the fields have been filled in – press the “Log Into Avatar Server” button on the form. If all is correct you will see the “Network View” web form. If there was a mistake an error will be displayed on this form.

3 Network View

Once you have successfully logged into the client interface, the next form displayed will be the *Network View*. The *Network View* displays all of the servers currently being monitored through your user profile. The form will have at least the server which you authenticated against. You can add other servers to monitor by typing the name of the server in the text box below the server table and pressing the “Add Server To List” Button.



As you will notice there are no batches registered on the server **vexus.ca**. This does not mean there are no batches at all registered; it means there are no batches on this server registered by the particular user you have logged into. If the user you logged into was given world read access to batches; then they would see all batches currently registered on that server of all the users who have registered batches. In this example the user we have logged in as is a typical user – which means they only have access to manage their own batches.

Notice that the hostname is linked. The hostname link provides a way to interact with the Avatar server. If the server was not running on your server or you can not route to the server, then an appropriate message will be displayed and the hostname will be grayed out and not hyper linked.

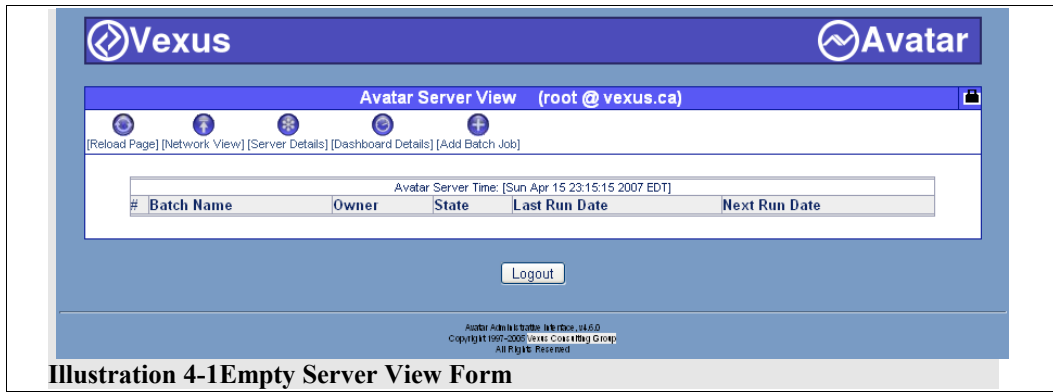
3.1 Persistent User Profile

One feature of Avatar's client is a persistent user profile. When you log in and select hosts to monitor the selections are saved on the server. If you were to log out and log in on another terminal, your host list will follow you¹.

¹Assuming you log into the same Avatar server.

4 Server View

Clicking on the linked hostname on the “Network View” will navigate you to the “Server View” This view shows all of the batches currently registered on that server by that user. If the user was given administrative privileges; then they would see all of the batches registered on that server. In our example; the user is a typical user with no special privileges and no prior registered batches.



As you will notice there are no batches registered on the server `vexus.ca`. This does not mean there are no batches at all registered; it means there are no batches on this server registered by the particular user you have logged into. If the user you logged into was given world read access to batches; then they would see all batches currently registered on that server of all the users who have registered batches. In this example the user we have logged in as is a typical user – which means they only have access to manage their own batches.

The next thing to do is register a batch.

5 Register A Batch Record

The next step to using Avatar, is to register a batch record on the server. To register a batch record click on the “Add Batch Button” icon on the *Server View* page.



When the “Add Batch Button” is clicked on the “Add Batch Form” page will be shown. This page is where you define the personality of the batch.

The *Add Batch* Form will appear as depicted in the following illustration.

Illustration 5-2 Empty Add Batch Form

Fill in the *Add Batch* form with the values depicted in the following illustration.

Illustration 5-3 Example Batch Registration

Your *Batch User* and *Batch Group* field values are going to differ from the example. The default *Batch User* and *Batch Group* are going to be the default user and group you logged in with. Do not change these field values.

The *Command File* location will be dependent upon where Avatar was installed on your system. In this case Avatar was installed in `/export/Avatar`. If Avatar was installed in `/opt/Avatar-4.0.0` then the full path to the command file would be `/opt/Avatar-4.0.0/examples/example.com`.

Once the form has been filled in press the **Add Batch** button at the bottom of the form. If the form was filled in correctly, the *Server View* form should appear with the new batch job. The following illustration depicts what your form should look like.

#	Batch Name	Owner	State	Last Run Date	Next Run Date
1	Example Batch	root	New	Never Run	Mon Apr 16 00:00:15 2007 EDT

Illustration 5-4 Server Form with Newly Registered Batch

6 Batch View

In order to see the details of the batch you will need to navigate to the “Batch View” form. In order to do this click on the hyper linked batch name. In the example provided; you would click on the “Example Batch” hyper link. Once done the “Batch View” form will appear. The following illustration depicts the Batch View form for the example batch we just registered.

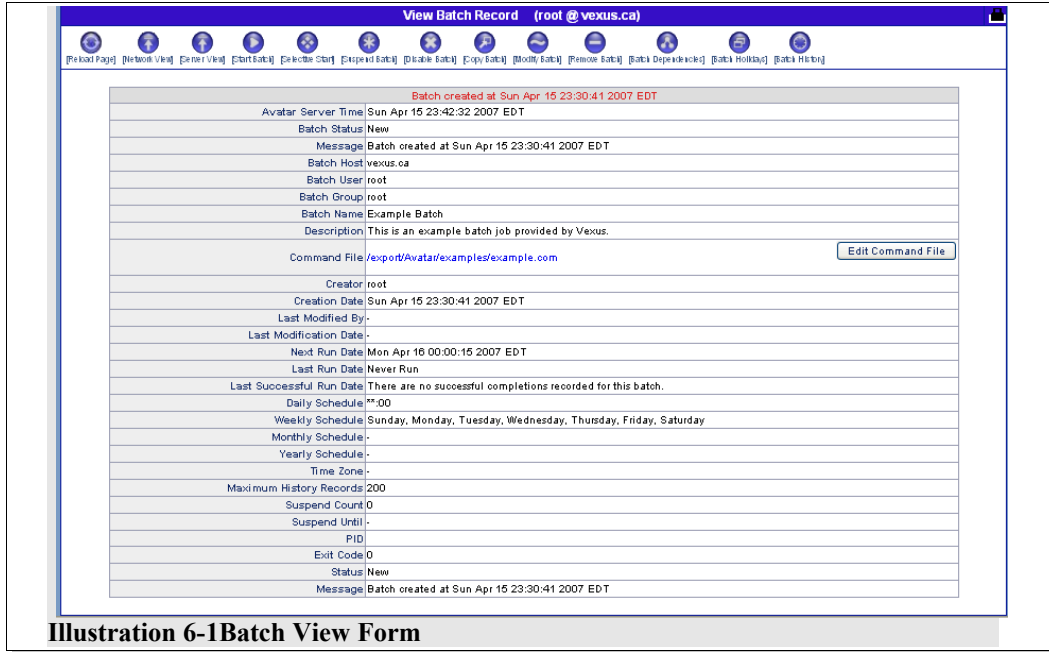


Illustration 6-1Batch View Form

7 Batch Control

The next step in the tutorial is to control the batch job. Batch control includes starting, stopping, pausing, resuming, suspending and disabling batch jobs. In this tutorial, we will demonstrate starting, stopping, acknowledging, pausing and disabling a batch job.

7.1 Starting the Batch

We could wait for the batch to be executed through the run queue; or we can start it by hand. To start the batch by hand press the “Start Batch” icon as depicted below.



Illustration 7-1Start Batch Button

The batch will start and the *Batch View* form will be redisplayed with the updated batch information. Please note that the icons across the top of the form have changed to reflect the new state. (**Running** in this case.)

View Batch Record (root @ vexus.ca)

Toolbar: [Reload Page], [Network View], [Server View], [Stop Batch], [Pause Batch], [Copy Batch], [Modify Batch], [Remove Batch], [Batch Dependencies], [Batch Holidays], [Batch History]

Executing command [Who is logged on.] (2 of 6).	
Avatar Server Time	Mon Apr 16 00:06:39 2007 EDT
Batch Status	Running
Message	Executing command [Who is logged on.] (2 of 6).
Batch Host	vexus.ca
Batch User	root
Batch Group	root
Batch Name	Example Batch
Description	This is an example batch job provided by Vexus.
Command File	/usr/local/Avatar/examples/example.com <input type="button" value="Edit Command File"/>
Creator	root
Creation Date	Sun Apr 15 23:30:41 2007 EDT
Last Modified By	root
Last Modification Date	Mon Apr 16 00:06:25 2007 EDT

Illustration 7-2Running Batch Details

7.2 Stopping the Batch

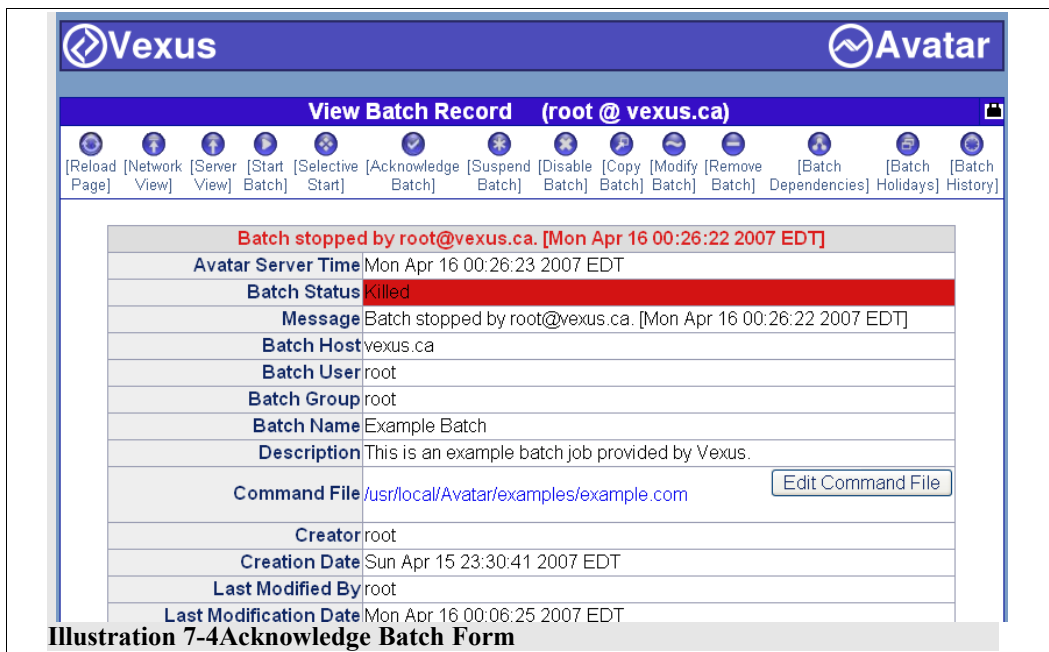
To stop a running batch press the stop batch icon and the batch will stop. The following illustration depicts the stop batch icon.



The state of the batch will be set to **Killed** and icon bars across the top will reflect the new state of the batch.

7.3 Acknowledging the Batch Error

Because we stopped the batch while it was running, the batch states will be set to **Killed**. The batch message field will be set accordingly as well.



With a regular error, the batch error may need to be acknowledged. To acknowledge a batch in an error state press the Acknowledge batch icon as depicted in the illustration below.



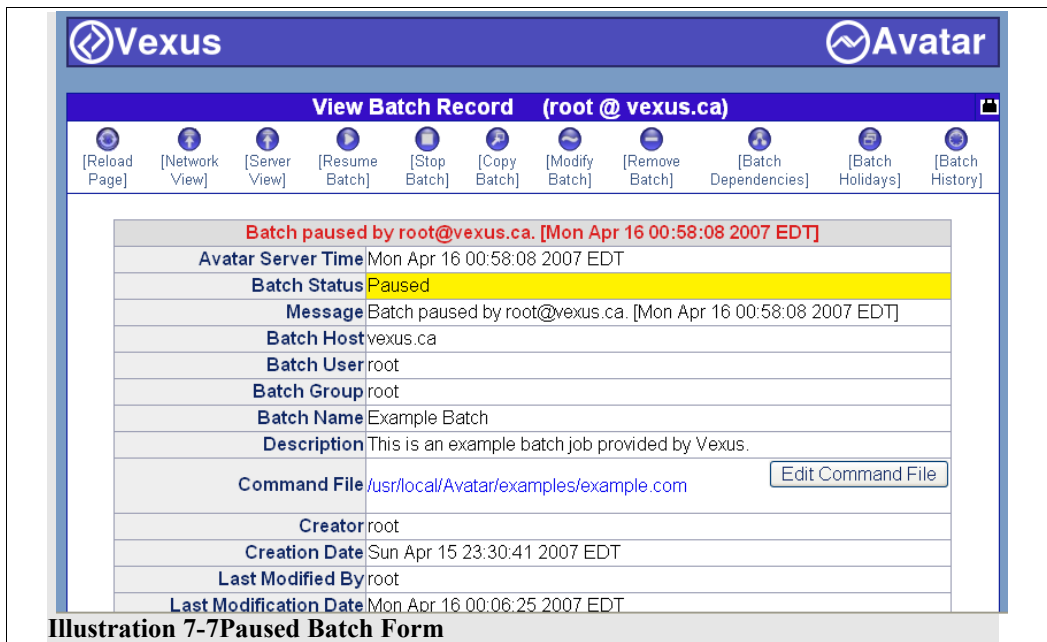
The batch will be set to the **Idle** state and the batch status message will be set accordingly.

7.4 Pausing the Batch

Start the batch job again, and press the pause batch icon as depicted in the illustration below.



This will pause the batch while it's running². When the batch is paused, the batch status message should be set accordingly. The following illustration depicts what the status message should look like.



7.5 Resuming the Batch

To resume the paused batch, press the resume batch icon. This will resume the paused batch where it left off.

²On a Unix based operating system the process will be suspended immediately. On an NT based operating system, the command will finished before the batch is paused.

7.6 Disabling the Batch

To remove the batch from the run queue, press the disable batch icon. This will remove the batch from the run queue. When the batch is disabled, the batch status message should be set accordingly. The following illustration depicts what the status message should look like.

The screenshot displays the 'View Batch Record' page for a batch job. The interface includes a navigation bar with the Vexus and Avatar logos, and a toolbar with various actions like [Reload Page], [Network View], [Server View], [Start Batch], [Selective Start], [Enable Batch], [Copy Batch], [Modify Batch], [Remove Batch], [Batch Dependencies], [Batch Holidays], and [Batch History]. The main content area shows a table with the following details:

Batch disabled by root@vexus.ca. [Mon Apr 16 01:16:47 2007 EDT]	
Avatar Server Time	Mon Apr 16 01:16:47 2007 EDT
Batch Status	Disabled
Message	Batch disabled by root@vexus.ca. [Mon Apr 16 01:16:47 2007 EDT]
Batch Host	vexus.ca
Batch User	root
Batch Group	root
Batch Name	Example Batch
Description	This is an example batch job provided by Vexus.
Command File	/usr/local/Avatar/examples/example.com <input type="button" value="Edit Command File"/>
Creator	root
Creation Date	Sun Apr 15 23:30:41 2007 EDT
Last Modified By	root
Last Modification Date	Mon Apr 16 00:06:25 2007 EDT

Illustration 7-8 Disabled Batch Form

8 Logging Out

To log out of the interface, press the ***Logout*** button on any of the web forms. Once the button has been pressed – you will be logged out and the login form will be displayed again.